

CPF

平行油壓轉角缸

CPF HYDRAULIC SWING CLAMP



產品特性

此系列產品配件採用優化設計,使體積更加緊湊,提高了產品強度。產品採用了專用防塵設計,提高了防塵和密封性,實現了高密封性。產品平行轉角設計節省了空間,適合夾具要求的緊湊化。

最大操作壓力: 45 kgf/cm²
 最小操作壓力: 20 kgf/cm²
 作動方式: 複動式

注意事項

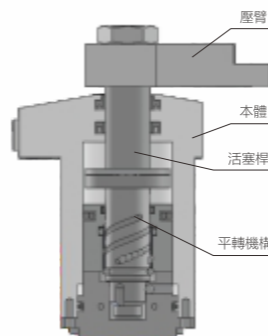
夾緊及放鬆作動速度需適當放緩。特殊壓臂長度及重量不得超過標準壓臂的1.5倍。壓臂旋轉示意圖及安裝拆卸方式,請參見第4頁。

FEATURES

The accessories of the CPF series are optimally designed to create a more compact-sized product with enhanced strength. With its special dust-proof design, this product has improved its sealing performance and protects against any particles or debris while in use. With its design to swing horizontally, this series is able to achieve space efficiency required when designing fixtures.

Max. operating pressure: 45 kgf/cm²
 Min. operating pressure: 20 kgf/cm²
 Double acting

剖面圖 Sectional view



NOTE

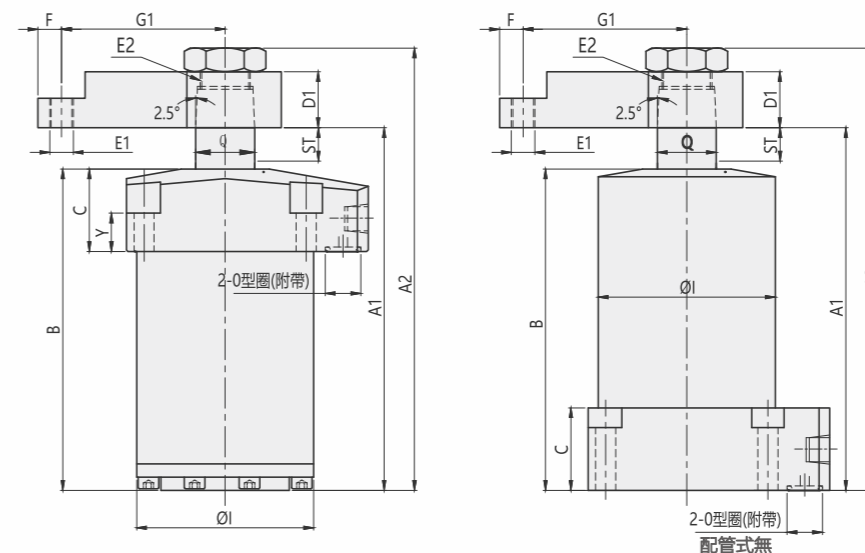
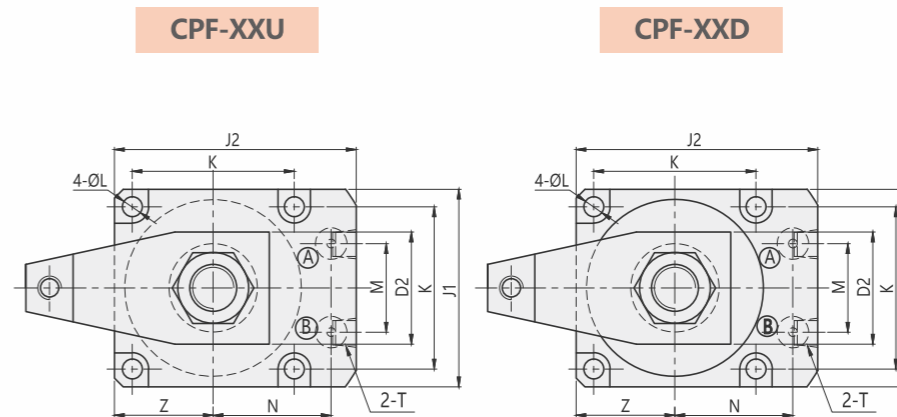
The action and the speed of clamping / unclamping needs to be slowed down appropriately. The length and weight of the customized clamping arm shall not exceed 1.5 times of the standard clamping arm. Please refer to page 4 for the rotation diagram, installation instructions and removal methods of the clamping arm.

訂購標示法 ORDERING INDICATION

示例: CPF-35DL-90G

CPF	系列 Series	CPF
35	油缸內徑 Hydraulic cylinder inside diameter	Φ35, Φ40
D	安裝方式 Installation	U: 上法蘭安裝 On flange installation D: 下法蘭安裝 Base flange installation
L	轉角方向 Swing direction	右轉R或左轉L Turn right R or turn left L
90	轉角角度 Swing angle	標準角度 Standard angle 90°(±2°) 訂做角度 Order angle 0°, 45°(±2°), 60°(±2°)
G	型式 Type	空白: 配管式 Line type G: 油路板型 Manifold type

備註: 選配調速閥為CZL系列



- Ⓐ 夾持油孔 Clamping port
- Ⓑ 放鬆油孔 Unclamping port

Unit:mm

MODEL ITEM	CPF-35U	CPF-40U	CPF-35D	CPF-40D
行程Stroke	10	10	10	10
A1鬆開狀態 Unclamp	114	123	114	123
A2鬆開狀態 Unclamp	141	150	141	150
B	96	109	96	109
C	28	28	28	28
D1	19	19	19	19
D2	38	38	38	38
E1	M6	M8	M6	M8
E2	M16X1.5	M16X1.5	M16X1.5	M16X1.5
F	6	8	6	8
G1	46.5	55.5	46.5	55.5
I	Φ50	Φ60	Φ50	Φ60
J1	59	67	59	67
J2	72	82	72	82
K	47	55	47	55
L	Φ6.8	Φ6.8	Φ6.8	Φ6.8
M	24	30	24	30
N	34	40	34	40
T	PT1/8	PT1/8	PT1/8	PT1/8
Y	16	16	16	16
Z	29.5	33.5	29.5	33.5
Q	Φ20	Φ20	Φ20	Φ20
O型圈(僅G型) O-Ring(G type)	P6	P9	P6	P9

規格參數表 SPECIFICATIONS

型號	理論夾持力 (45 kgf/cm ²)	夾緊行程	總行程	推出容積	拉入容積	推出受壓面積	拉入受壓面積	使用溫度範圍	使用流體
MODEL	CLAMPING FORCE AT 45 kgf/cm ² (kgf)	CLAMPING STROKE (mm)	TOTAL STROKE(mm)	CYLINDER CAPACITY UNCLAMP(cm ³)	CYLINDER CAPACITY CLAMP(cm ³)	EFFPISTON AREA UNCLAMP(cm ²)	EFFPISTON AREA CLAMP(cm ²)	RANGE OF TEMPERATURE(°C)	USABLE FLUID
CPF-35	291	10	10	6.47	6.47	6.47	6.47	-10~+70°C	相當於 ISO 黏度等級的 ISO-VG-32 一般液壓油 Recommended: ISO-VG-32 hydraulic oil equivalent to ISO viscosity grade
CPF-40	424	10	10	9.43	9.43	9.43	9.43	-10~+70°C	