

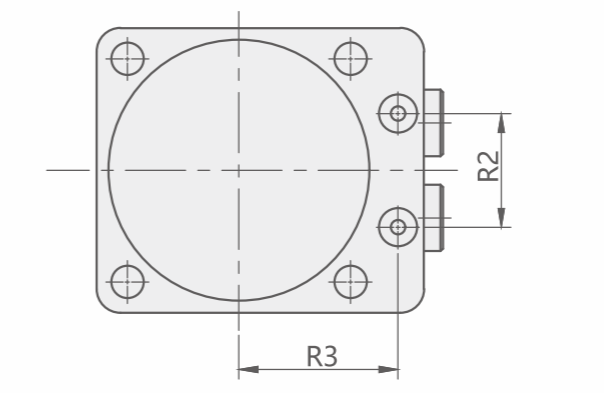
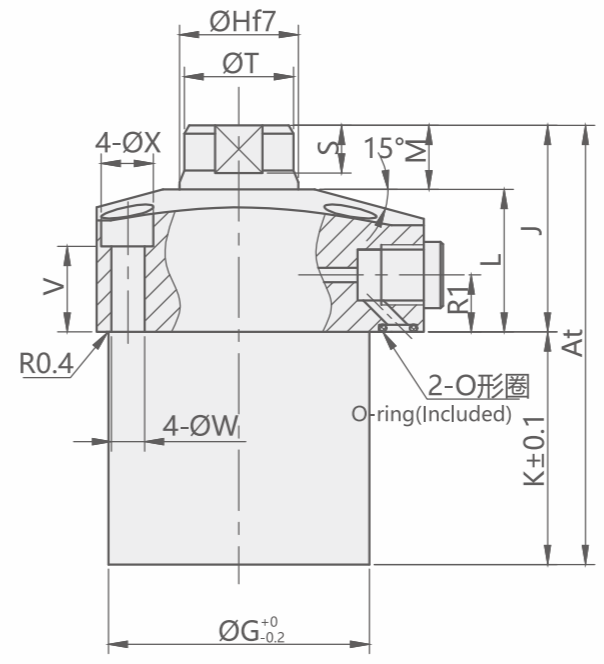
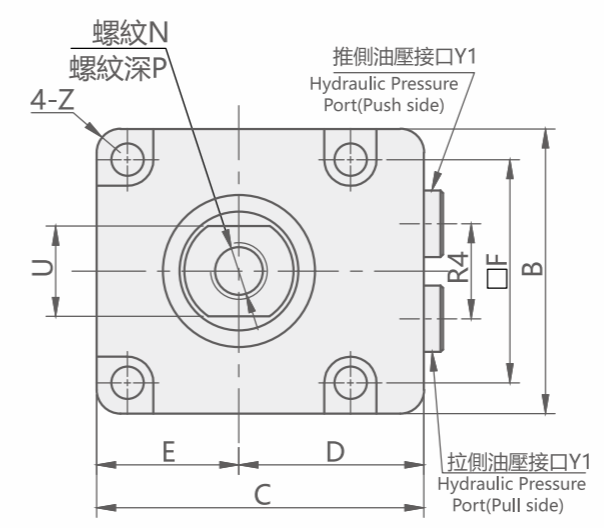
CCNA

油壓緊湊型直線缸

CCNA HYDRAULIC COMPACT LINEAR CYLINDER



T : 內螺紋型 Female Threaded



T : 內螺紋型 Female Threaded

Unit:mm

| 型號 Model | CCNA02 -□T | CCNA04 -□T | CCNA06 -□T | CCNA10 -□T | CCNA16 -□T | CCNA25 -□T |
|------------------|-----------------------------|-----------------------------|-------------------------------|-----------------------------|-----------------------------|-------------------------------|
| B | 45 | 50 | 57 | 70 | 86 | 108 |
| C | 55 | 60 | 66 | 82 | 96 | 120 |
| D | 32.5 | 35 | 37.5 | 47 | 53 | 66 |
| E | 22.5 | 25 | 28.5 | 35 | 43 | 54 |
| F | 35 | 40 | 46 | 56 | 68 | 88 |
| ΦG | 39 | 47 | 53 | 63 | 78 | 100 |
| ΦH | 16 ^{-0.016/-0.034} | 18 ^{-0.016/-0.034} | 22.4 ^{-0.020/-0.041} | 25 ^{-0.020/-0.041} | 30 ^{-0.020/-0.041} | 35.5 ^{-0.025/-0.050} |
| J | 38 | 39.5 | 42.5 | 51 | 57 | 65.5 |
| L | 27.5 | 28 | 30 | 37.5 | 41.5 | 48.5 |
| M | 10.5 | 11.5 | 12.5 | 13.5 | 15.5 | 17 |
| N | M8×1.25 | M8×1.25 | M10×1.5 | M12×1.75 | M16×2.0 | M20×2.5 |
| P | 14 | 14 | 18 | 21 | 27 | 33 |
| R1 | 12.5 | 12.5 | 12.5 | 14 | 14 | 21 |
| R2 | 22 | 24 | 28 | 36 | 45 | 50 |
| R3 | 25 | 28 | 30.5 | 36 | 42 | 57 |
| R4 | 20 | 22 | 26 | 30 | 38 | 50 |
| S | 7 | 8 | 9 | 10 | 12 | 14 |
| ΦT | 14±0.2 | 16±0.2 | 20±0.2 | 23±0.2 | 28±0.2 | 33.5±0.2 |
| U | 12 | 14 | 17 | 19 | 24 | 30 |
| V | 18 | 17 | 17 | 20 | 20 | 20 |
| ΦW | 5.5 | 5.5 | 6.8 | 9 | 11 | 14 |
| ΦX | 9.5 | 9.5 | 11 | 14 | 17.5 | 20 |
| Y1 | G1/8 | G1/8 | G1/8 | G1/4 | G1/4 | G3/8 |
| Z | R3 | R5 | R5 | R6 | R7 | R10 |
| O形圈 (氟橡膠Hs90) | P7 | P7 | P7 | P8 | P8 | P10 |
| At 行程 | 10 | 66 | 70.5 | 74 | 88.5 | 96 |
| | 15 | 66 | 70.5 | 74 | - | - |
| | 20 | 81 | 85.5 | 89 | 88.5 | 96 |
| | 30 | 81 | 85.5 | 89 | 108.5 | 116 |
| | 40 | 101 | 105.5 | 109 | 108.5 | 116 |
| | 50 | 101 | 105.5 | 109 | 128.5 | 136 |
| | 60 | 121 | 125.5 | 129 | 128.5 | 136 |
| | 70 | 121 | 125.5 | 129 | 148.5 | 156 |
| | 80 | - | - | 149 | 148.5 | 156 |
| | 90 | - | - | 149 | 168.5 | 176 |
| | 100 | - | - | - | 168.5 | 176 |
| K 行程 | 10 | 28 | 31 | 31.5 | 37.5 | 39 |
| | 15 | 28 | 31 | 31.5 | - | - |
| | 20 | 43 | 46 | 46.5 | 37.5 | 39 |
| | 30 | 43 | 46 | 46.5 | 57.5 | 59 |
| | 40 | 63 | 66 | 66.5 | 57.5 | 59 |
| | 50 | 63 | 66 | 66.5 | 77.5 | 79 |
| | 60 | 83 | 86 | 86.5 | 77.5 | 79 |
| | 70 | 83 | 86 | 86.5 | 97.5 | 99 |
| | 80 | - | - | 106.5 | 97.5 | 99 |
| | 90 | - | - | 106.5 | 117.5 | 119 |
| | 100 | - | - | - | 117.5 | 119 |

註:可選裝CVCF調速閥

產品特性

以最小空間實現大的行程。

最大操作壓力: 70 kgf/cm²
 最小操作壓力: 10 kgf/cm²
 耐壓: 105kgf/cm²

FEATURES

Maximum stroke is available with minimum space.

Max:operating pressure: 70kgf/cm²
 Min:operating pressure: 10kgf/cm²
 Withstanding pressure: 105kgf/cm²

訂購標示法 ORDERING INDICATION

示例: CCNA02-10T

| CCNA | 系列 Series | CCNA |
|------|-------------------|--|
| 02 | 02/04/06/10/16/25 | |
| 10 | 行程 Stroke | CCNA02: 10/15/20/30/40/50/60/70 CCNA04: 10/15/20/30/40/50/60/70 CCNA06: 10/15/20/30/40/50/60/70/80/90 CCNA10: 10/20/30/40/50/60/70/80/90/100 CCNA16: 10/20/30/40/50/60/70/80/90/100 CCNA25: 20/30/40/50/60/70/80/90/100/110 |

| T | 活塞桿前端形狀 Shape of Piston Tip | T : 內螺紋型 Female Threaded P : 銷孔連接型 Pin-Hole Option M : 外螺紋型 Male Threaded |
|---|--------------------------------|---|
| | | |

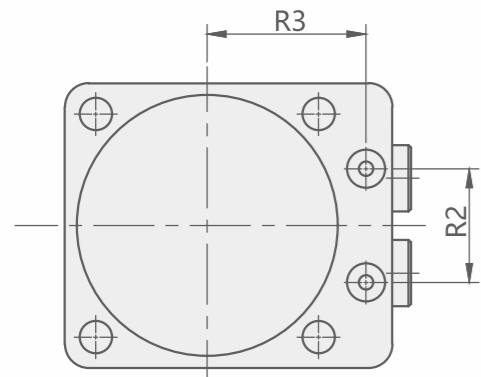
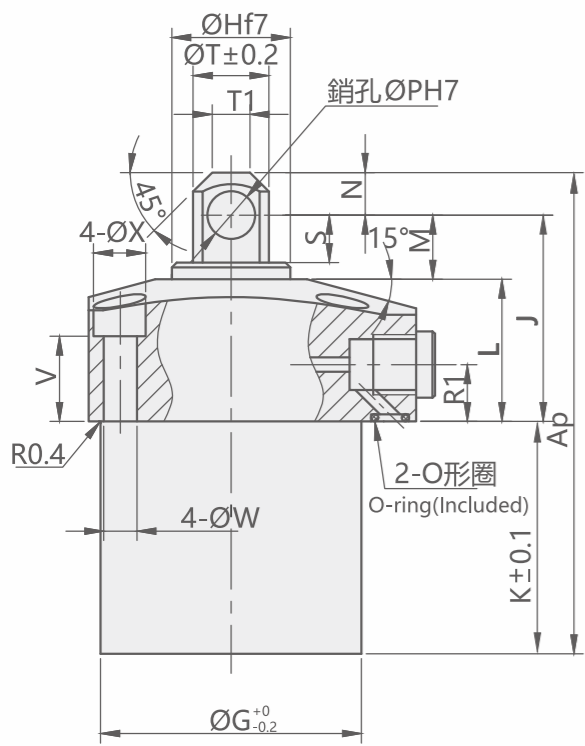
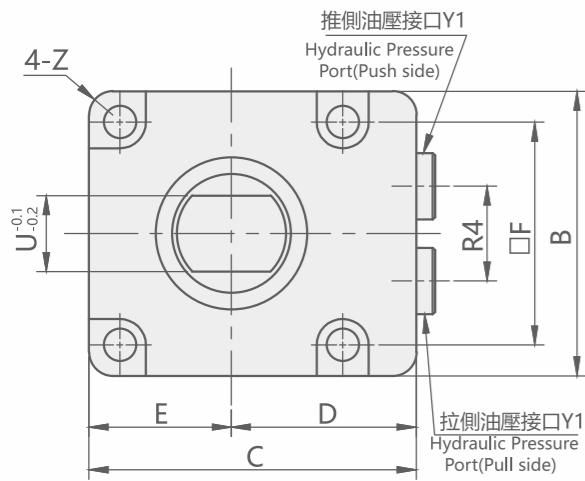
規格參數表 SPECIFICATIONS

| 型號 MODEL | 油缸面積 Cylinder Area(cm ²) | | 油缸輸出力 Cylinder force (Calculation Formula) KN | | 油缸容量 Cylinder Capacity (Calculation Formula) cm ³ | | 油缸內徑 Cylinder inside diameter (mm) | 活塞桿徑 Rod Diameter(mm) | 使用溫度範圍 Operating Temperature (°C) | 使用流體 Usable Fluid |
|-------------|---|-----------------|---|-----------------|--|-----------------|--|-----------------------------|---|---|
| | 推側 Push Side | 拉側 Pull Side | 推側 Push Side | 拉側 Pull Side | 推側 Push Side | 拉側 Pull Side | | | | |
| CCNA02 | 4.9 | 2.9 | 0.49xP | 0.29xP | 0.49xS | 0.29xS | Φ25 | Φ16 | 0~+70°C | 相當於ISO黏度等級的ISO-VG-32一般液壓油 Recommended: ISO-VG-32 hydraulic oil equivalent to ISO viscosity grade |
| CCNA04 | 7.1 | 4.5 | 0.71xP | 0.45xP | 0.71xS | 0.45xS | Φ30 | Φ16 | 0~+70°C | |
| CCNA06 | 9.6 | 5.7 | 0.96xP | 0.57xP | 0.96xS | 0.57xS | Φ35 | Φ22.4 | 0~+70°C | |
| CCNA10 | 15.2 | 10.3 | 1.52xP | 1.03xP | 1.52xS | 1.03xS | Φ44 | Φ25 | 0~+70°C | |
| CCNA16 | 24.6 | 17.6 | 2.46xP | 1.76xP | 2.46xS | 1.76xS | Φ56 | Φ30 | 0~+70°C | |
| CCNA25 | 38.5 | 28.6 | 3.85xP | 2.86xP | 3.85xS | 2.86xS | Φ70 | Φ35.5 | 0~+70°C | |

P:銷孔連接型 Pin-Hole Option

P:銷孔連接型 Pin-Hole Option

Unit:mm



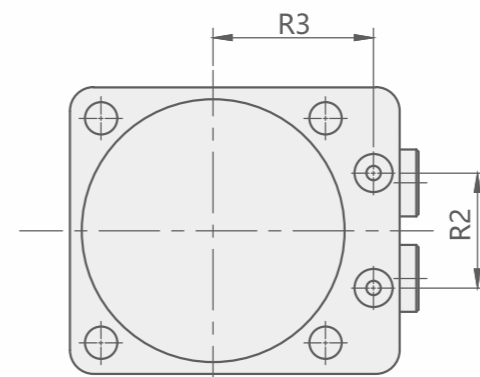
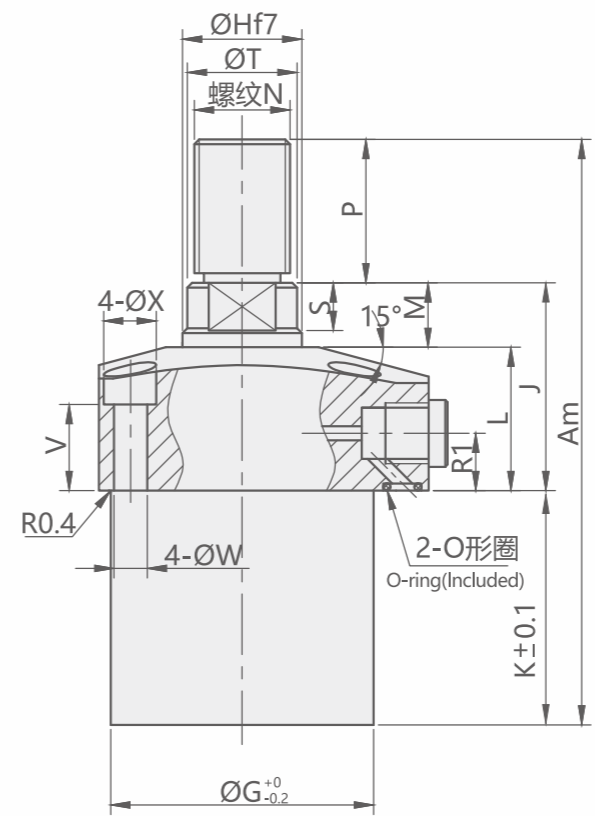
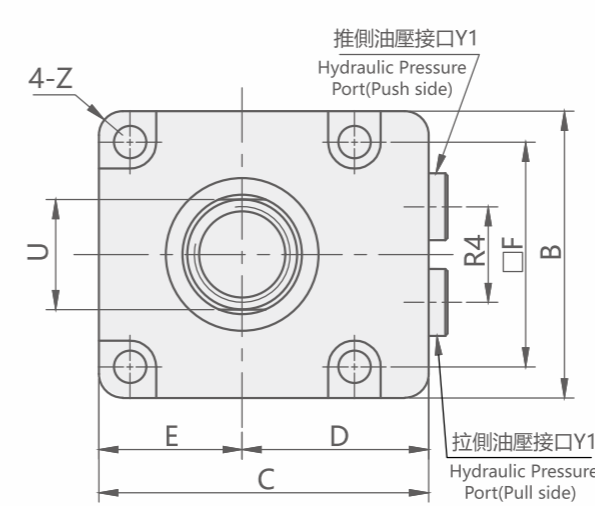
| 型號 Model | CCNA02 -□P | CCNA04 -□P | CCNA06 -□P | CCNA10 -□P | CCNA16 -□P | CCNA25 -□P |
|------------------|-----------------------------|-----------------------------|-------------------------------|-----------------------------|-----------------------------|-------------------------------|
| B | 45 | 50 | 57 | 70 | 86 | 108 |
| C | 55 | 60 | 66 | 82 | 96 | 120 |
| D | 32.5 | 35 | 37.5 | 47 | 53 | 66 |
| E | 22.5 | 25 | 28.5 | 35 | 43 | 54 |
| F | 35 | 40 | 46 | 56 | 68 | 88 |
| ΦG | 39 | 47 | 53 | 63 | 78 | 100 |
| ΦH | 16 ^{-0.016/-0.034} | 18 ^{-0.016/-0.034} | 22.4 ^{-0.020/-0.041} | 25 ^{-0.020/-0.041} | 30 ^{-0.020/-0.041} | 35.5 ^{-0.025/-0.050} |
| J | 42.5 | 44.5 | 50.5 | 60 | 67 | 79.5 |
| L | 27.5 | 28 | 30 | 37.5 | 41.5 | 48.5 |
| M | 10 | 10.5 | 12.5 | 13.5 | 14.5 | 18 |
| N | 5 | 6 | 8 | 9 | 11 | 13 |
| ΦP | 6 ^{-0.012/-0} | 6 ^{-0.012/-0} | 8 ^{-0.015/-0} | 10 ^{-0.015/-0} | 12 ^{-0.018/-0} | 14 ^{-0.018/-0} |
| R1 | 12.5 | 12.5 | 12.5 | 14 | 14 | 21 |
| R2 | 22 | 24 | 28 | 36 | 45 | 50 |
| R3 | 25 | 28 | 30.5 | 36 | 42 | 57 |
| R4 | 20 | 22 | 26 | 30 | 38 | 50 |
| S | 6.5 | 7 | 9 | 10 | 10.8 | 14.5 |
| ΦT | 10 | 12 | 14 | 16 | 20 | 26 |
| ΦT1 | 5 | 5 | 6 | 8 | 10 | 14 |
| U | 6 | 6 | 8 | 11 | 14 | 16 |
| V | 18 | 17 | 17 | 20 | 20 | 20 |
| ΦW | 5.5 | 5.5 | 6.8 | 9 | 11 | 14 |
| ΦX | 9.5 | 9.5 | 11 | 14 | 17.5 | 20 |
| Y1 | G1/8 | G1/8 | G1/8 | G1/4 | G1/4 | G3/8 |
| Z | R3 | R5 | R5 | R6 | R7 | R10 |
| O形圈 (氟橡膠Hs90) | P7 | P7 | P7 | P8 | P8 | P10 |
| Ap 行程 | 10 | 70.5 | 75.5 | 82 | 97.5 | 106 |
| | 15 | 70.5 | 75.5 | 82 | - | - |
| | 20 | 85.5 | 90.5 | 97 | 97.5 | 106 |
| | 30 | 85.5 | 90.5 | 97 | 117.5 | 126 |
| | 40 | 105.5 | 110.5 | 117 | 117.5 | 126 |
| | 50 | 105.5 | 110.5 | 117 | 137.5 | 146 |
| | 60 | 125.5 | 130.5 | 137 | 137.5 | 146 |
| | 70 | 125.5 | 130.5 | 137 | 157.5 | 166 |
| | 80 | - | - | 157 | 157.5 | 166 |
| | 90 | - | - | 157 | 177.5 | 186 |
| | 100 | - | - | - | 177.5 | 186 |
| | 110 | - | - | - | - | 209.5 |
| K 行程 | 10 | 28 | 31 | 31.5 | 37.5 | 39 |
| | 15 | 28 | 31 | 31.5 | - | - |
| | 20 | 43 | 46 | 46.5 | 37.5 | 39 |
| | 30 | 43 | 46 | 46.5 | 57.5 | 59 |
| | 40 | 63 | 66 | 66.5 | 57.5 | 59 |
| | 50 | 63 | 66 | 66.5 | 77.5 | 79 |
| | 60 | 83 | 86 | 86.5 | 77.5 | 79 |
| | 70 | 83 | 86 | 86.5 | 97.5 | 99 |
| | 80 | - | - | 106.5 | 97.5 | 99 |
| | 90 | - | - | 106.5 | 117.5 | 119 |
| | 100 | - | - | - | 117.5 | 119 |
| | 110 | - | - | - | - | 130 |

註:可選裝CVCF調速閥

M:外螺紋型 Male Threaded

M:外螺紋型 Male Threaded

Unit:mm



| 型號 Model | CCNA02 -□M | CCNA04 -□M | CCNA06 -□M | CCNA10 -□M | CCNA16 -□M | CCNA25 -□M |
|------------------|-----------------------------|-----------------------------|-------------------------------|-----------------------------|-----------------------------|-------------------------------|
| B | 45 | 50 | 57 | 70 | 86 | 108 |
| C | 55 | 60 | 66 | 82 | 96 | 120 |
| D | 32.5 | 35 | 37.5 | 47 | 53 | 66 |
| E | 22.5 | 25 | 28.5 | 35 | 43 | 54 |
| F | 35 | 40 | 46 | 56 | 68 | 88 |
| ΦG | 39 | 47 | 53 | 63 | 78 | 100 |
| ΦH | 16 ^{-0.016/-0.034} | 18 ^{-0.016/-0.034} | 22.4 ^{-0.020/-0.041} | 25 ^{-0.020/-0.041} | 30 ^{-0.020/-0.041} | 35.5 ^{-0.025/-0.050} |
| J | 58 | 64.5 | 70 | 81 | 92 | 110.5 |
| L | 27.5 | 28 | 30 | 37.5 | 41.5 | 48.5 |
| M | 10.5 | 11.5 | 12.5 | 13.5 | 15.5 | 17 |
| N | M12x1.25 | M14x1.5 | M16x1.5 | M20x1.5 | M24x1.5 | M30x1.5 |
| P | 20 | 25 | 27.5 | 30 | 35 | 45 |
| R1 | 12.5 | 12.5 | 12.5 | 14 | 14 | 21 |
| R2 | 22 | 24 | 28 | 36 | 45 | 50 |
| R3 | 25 | 28 | 30.5 | 36 | 42 | 57 |
| R4 | 20 | 22 | 26 | 30 | 38 | 50 |
| S | 7 | 8 | 9 | 10 | 12 | 14 |
| ΦT | 14±0.2 | 16±0.2 | 20±0.2 | 23±0.2 | 28±0.2 | 33.5±0.2 |
| U | 12 | 14 | 17 | 19 | 24 | 30 |
| V | 18 | 17 | 17 | 20 | 20 | 20 |
| ΦW | 5.5 | 5.5 | 6.8 | 9 | 11 | 14 |
| ΦX | 9.5 | 9.5 | 11 | 14 | 17.5 | 20 |
| Y1 | G1/8 | G1/8 | G1/8 | G1/4 | G1/4 | G3/8 |
| Z | R3 | R5 | R5 | R6 | R7 | R10 |
| O形圈 (氟橡膠Hs90) | P7 | P7 | P7 | P8 | P8 | P10 |
| Am 行程 | 10 | 86 | 95.5 | 101.5 | 118.5 | 131 |
| | 15 | 86 | 95.5 | 101.5 | - | - |
| | 20 | 101 | 110.5 | 116.5 | 118.5 | 131 |
| | 30 | 101 | 110.5 | 116.5 | 138.5 | 151 |
| | 40 | 121 | 130.5 | 136.5 | 138.5 | 151 |
| | 50 | 121 | 130.5 | 136.5 | 158.5 | 171 |
| | 60 | 141 | 150.5 | 156.5 | 158.5 | 171 |
| | 70 | 141 | 150.5 | 156.5 | 178.5 | 191 |
| | 80 | - | - | 176.5 | 178.5 | 191 |
| | 90 | - | - | 176.5 | 198.5 | 211 |
| | 100 | - | - | - | 198.5 | 211 |
| | 110 | - | - | - | - | 240.5 |
| K 行程 | 10 | 28 | 31 | 31.5 | 37.5 | 39 |
| | 15 | 28 | 31 | 31.5 | - | - |
| | 20 | 43 | 46 | 46.5 | 37.5 | 39 |
| | 30 | 43 | 46 | 46.5 | 57.5 | 59 |
| | 40 | 63 | 66 | 66.5 | 57.5 | 59 |
| | 50 | 63 | 66 | 66.5 | 77.5 | 79 |
| | 60 | 83 | 86 | 86.5 | 77.5 | 79 |
| | 70 | 83 | 86 | 86.5 | 97.5 | 99 |
| | 80 | - | - | 106.5 | 97.5 | 99 |
| | 90 | - | - | 106.5 | 117.5 | 119 |
| | 100 | - | - | - | 117.5 | 119 |
| | 110 | - | - | - | - | 130 |

註:可選裝CVCF調速閥