

CBLU

方塊&緊湊型
槓桿式油壓缸

CBLU HYDRAULIC LEVERAGE CLAMP



產品特性

此系列產品配件採用優化設計,與傳統產品比較夾緊能力提高了。產品支撐點部位與缸體採用一體化結構,使體積更加緊湊,提高了產品強度。產品採用了專用防塵設計,提高了防塵和密封性,實現了高密封性。產品採用方塊型設計,不需墊塊安裝方便。

最大操作壓力: 70 kgf/cm²
最小操作壓力: 10 kgf/cm²

注意事項

夾緊及放鬆動作速度需適當放緩。

FEATURES

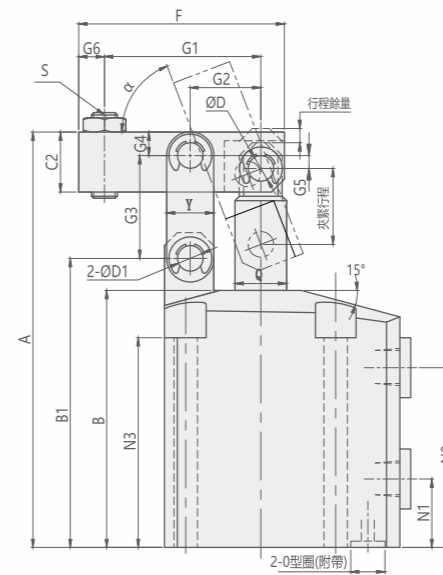
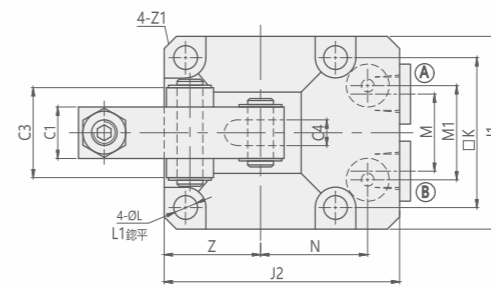
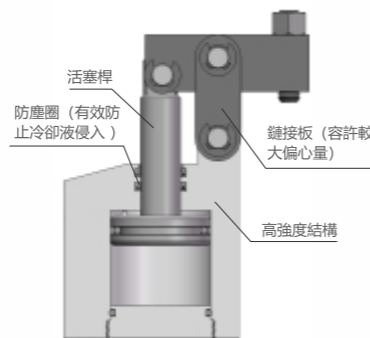
The accessories of the CBLU series are optimally designed and the clamping capacity has increased immensely compared to the traditional products. The cylinder and its supporting point use an integrated structure to create a more compact-sized product with enhanced strength. With its special dust-proof design, this product has improved its sealing performance and protects against any particles or debris while in use. The product has been developed with a block-shape construction for easy and smooth installation.

Max. operating pressure: 70 kgf/cm²
Min. operating pressure: 10 kgf/cm²

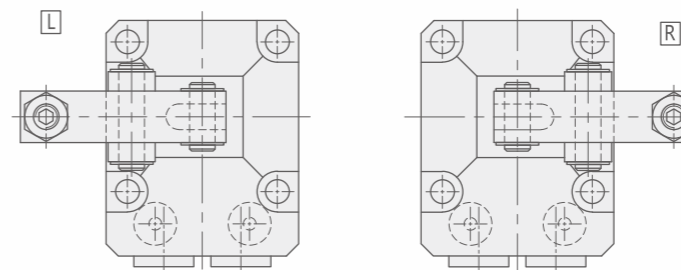
NOTE

The action and the speed of clamping / unclamping needs to be slowed down appropriately.

剖面圖 Sectional view



壓臂安裝方向 Lever Direction



- Ⓐ 夾持油孔 Clamping port
- Ⓑ 放鬆油孔 Unclamping port

Unit:mm

MODEL ITEM	CBLU -25	CBLU -30	CBLU -35	CBLU -45	CBLU -55	CBLU -70
A	97	108	119.5	140	166	199
B	60	66	71	83	95	112
B1	67.5	75.5	81.5	95	109.5	130
C1	12	12	16	19	22	32
C2	14	16	20	25	31	38
C3	21	21	28	37	46	56
C4	6	6	8	10	11	16
D	Φ6	Φ6	Φ6	Φ8	Φ12	Φ14
D1	Φ6	Φ6	Φ8	Φ10	Φ14	Φ16
F	48.5	54	64	73.5	90.5	115.5
G1	36.5	42	50	56.5	69.5	87.5
G2	16.5	18.5	21	24.5	30.5	37.5
G3	24	26	30	35.5	44	53
G4	5.5	6.5	8	9.5	12.5	16
G5	3	3.5	6	7.5	9.5	9.5
G6	6	6	8	10	11	15
J1	45	50	57	70	86	108
J2	55	60	66	82	96	120
K	35	40	46	56	68	88
L	Φ5.5	Φ5.5	Φ6.8	Φ9	Φ11	Φ14
L1	Φ9.5	Φ9.5	Φ11	Φ14	Φ17.5	Φ20
M	20	22	26	30	38	50
M1	22	24	28	36	45	50
N	25	28	30.5	36	42	57
N1	16	17	17	22	23	28
N2	42	48	51	56.5	64.5	80.5
N3	49	54	57	66	73.5	83
Z	22.5	25	28.5	35	43	54
Z1	C3	C3	C3	C4	C6	C6.5
S	M6x25	M6x25	M8x30	M10x40	M12x50	M16x60
α	69°	71°	70°	70°	69°	72°
Y	11	13	15	19	25	32
Q	Φ12	Φ14	Φ14	Φ16	Φ22	Φ28
配管式油口 PORT WITH LINE TYPE	PT1/8	PT1/8	PT1/8	PT1/4	PT1/4	PT3/8
油孔O型圈 (C型) O-RING HOLE (C TYPE)	P7	P7	P7	P8	P8	P10

訂購標示法 ORDERING INDICATION

示例: CBLU-30CL

CBLU	系列 Series	CBLU
30	油缸內徑 Hydraulic cylinder inside diameter	Φ 25, Φ 30, Φ 35, Φ 45 Φ 55, Φ 70
C	油口型式 Port type	空白: 配管式 G: 油路板式 C: 油路板式附調速 Blank: Line type G: Manifold type C: Manifold with flow type
L	壓臂安裝方向 Lever direction	空白: 標準 L: 左 R: 右 Blank: Standard L: Left R: Right

規格參數表 SPECIFICATIONS

型號	理論夾持力 (70 kgf/cm ²)	夾緊行程	總行程	推出容積	拉入容積	推出受壓面積	拉入受壓面積	使用溫度範圍	使用液體
MODEL	CLAMPING FORCE AT 70 kgf/cm ² (kgf)	CLAMPING STROKE (mm)	TOTAL STROKE (mm)	CYLINDER CAPACITY CLAMP (cm ³)	CYLINDER CAPACITY UNCLAMP (cm ³)	EFF.PISTON AREA CLAMP (cm ²)	EFF.PISTON AREA UNCLAMP (cm ²)	RANGE OF TEMPERATURE (°C)	USABLE FLUID
CBLU-25	283	17.5	20.5	10.00	5.69	4.91	2.78	-10~+70°C	相當於 ISO 黏度等級的 ISO-VG-32 一般液壓油 Recommended: ISO-VG-32 hydraulic oil equivalent to ISO viscosity grade
CBLU-30	391	20.5	23.5	16.60	13.00	7.07	5.53	-10~+70°C	
CBLU-35	486	23	26	25.00	21.00	9.62	8.08	-10~+70°C	
CBLU-45	852	26.5	29.5	46.90	41.00	15.90	13.90	-10~+70°C	
CBLU-55	1300	33	36	85.50	71.80	23.75	19.95	-10~+70°C	
CBLU-70	2020	42	45	173.10	145.40	38.47	32.32	-10~+70°C	